



pressSIGN PANTONE® licensed

pressSIGN

intelligent printing



*accurate
colour
on press*

ISO 12647-2

ISO 12647-3

ISO 12647-4

ISO 12647-6

GRACol G7

SWOP

or any user defined standard

Bodoni Systems
the colour experts

intelligent printing

accurate colour on press

pressSIGN tests and controls the printing process to give consistently accurate colour and provides analysis of press performance.

Using pressSIGN dramatically reduces make-ready times and increases print quality. Matching international printing standards such as ISO 12647 is easy.

pressSIGN uses a spectrophotometer which scans the whole press sheet providing a step-by-step guide for accurate colour.

every pressSIGN reading is written to a database allowing quick and immediate access to all past jobs. Jobs can be selected by any combination of criteria such as press, operator, date, time, run length, make ready time, print standard and client. Comments can be added to any job or reading and searched for on the database making it easy to see the impact of any changes made on the press such as new consumables or settings.

pressSIGN-Pro and **pressSIGN-Trends** allow you to import multiple jobs and analyse all aspects of the production process. For example, all today's jobs from one press can be imported and analysed by overall score, dot gain, grey balance, primary score, overprint, trapping and make ready times. **pressSIGN-Pro** and **pressSIGN-Trends** help users to understand how their presses are performing, and how to improve print quality. With **pressSIGN-Trends**, watch the performance of the press from the office as each reading appears in the database. **pressSIGN** really does mean **intelligent printing**.

pressSIGN-Pro & pressSIGN-Trends

each **pressSIGN-Pro** installation comes with a free copy of **pressSIGN-Trends**

set up jobs in **pressSIGN-Trends** with job details including company name, client, press target, run length and allocate the job to press and operator.

the operator opens **pressSIGN-Pro** and sees only his jobs. He opens the next job and everything is prepared including any required instructions. The **pressSIGN-Pro** operator can see the overview and how to adjust each ink key across the press.

the pressSIGN-Trends administrator can view all jobs printed, compare press, operator or shift performance, see jobs currently on press and update plate adjustment curves.

the trends views and production reports in **pressSIGN-Pro** and **Trends** make it easy to analyse all aspects of the quality of print production including wastage.

density adjustment

pressSIGN is unique in predicting the correct density target for each of the primary colours

this density target is based on the actual paper, ink and press and is based on the selected press target. House densities can be a rough guide, but **pressSIGN**'s predictions are based on real time information produced from the press.

the easy-to-read graphical interface shows how to adjust the ink density for each primary colour making it easy to see what density settings to apply. **pressSIGN-Pro** provides this information for each ink key, while the standard edition of **pressSIGN** gives you an average setting for the sheet. In addition you can quickly see the range of densities in target and the closest measured density. This means that hitting the right colour is quick, easy and objective.

plate adjustment curves

pressSIGN generates plate adjustment curves easily

high performance printing requires complete control over dot gain curves. **pressSIGN** exports plate curve adjustment files for use in most common RIP workflows.

simply import the plate curve data to create new plate curves or adjust existing ones. Curves are updated in seconds enabling users to maintain quality standards for every print job.

pressSIGN online

publish **pressSIGN** reports on the web

every **pressSIGN** user can register on the 'find a printer' page of **pressSIGN** online.

upload **pressSIGN** reports to **pressSIGN** online for access by clients and others.

clients create their account at **pressSIGN** online with their account id and see only the reports for their own jobs.

send an email directly from any version of **pressSIGN**.

printing standards

print to international or user defined standards
pressSIGN is the most effective tool for matching any printing standard

select any international standard:

- ISO 12647-2 Sheet-fed or web offset
- ISO 12647-3 Newsprint
- ISO 12647-4 Gravure
- ISO 12647-6 Flexographic
- GRACoL G7 Sheet-fed or Web (SWOP)

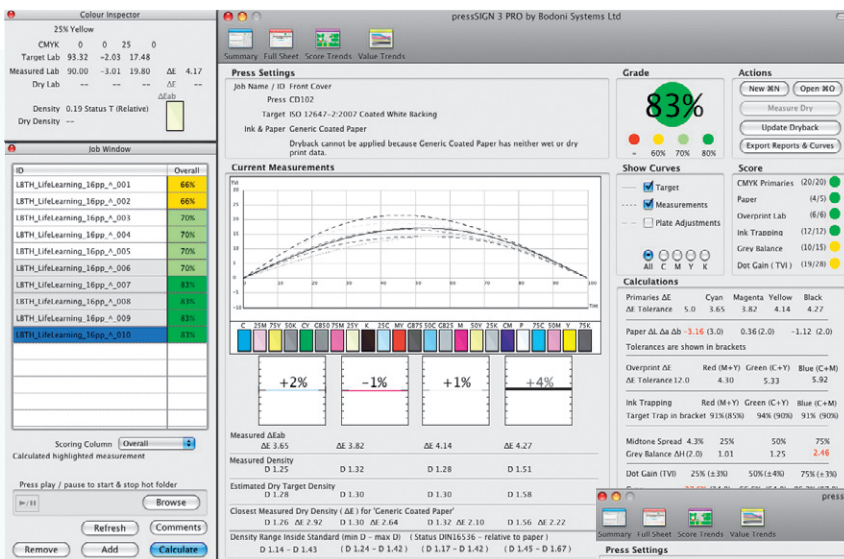
create a new standard from an imported CMYK ICC profile. Measure the press paper colour and adjust the target based on the actual paper in use. Export the new ICC profile for use in proofing systems and design applications for a complete colour matched system.

use a measured press sheet to create a standard. This is ideal for print re-runs or capturing a press pass. Export the press standard to other users so that they can match your work.

control strip

the pressSIGN control strip is automatically generated

pressSIGN will automatically generate the control strip depending on the selected print standard and according to press and ink key widths.



wet or dry

pressSIGN reads the press sheet wet or dry!

pressSIGN adjusts for the colour shift that takes place as the inks dry.

predicting how the colour appears when dry means you are giving the client exactly what is expected according to a verified proof.

consistency score

read the full width colour bar

read the full width colour bar with all versions of pressSIGN using the pressSIGN extended ruler available in B1 (1200 mm/40ins) B2 (750 mm/ 29ins) or B3 (500 mm/20ins) format.

pressSIGN provides a consistency score for the colours across the sheet. Reading the full width of the press sheet provides more accurate data for assessment of quality and also for updating plate curves.



PANTONE®

& spot colour capability

version 4 of pressSIGN provides the most accurate printing of 5 and 6 colour jobs.

working with spot colours is easy, simply select from the PANTONE® libraries, measure a swatch or type in a L*a*b* value. pressSIGN predicts the correct density adjustments to produce the best possible match to the target.

select the PANTONE® colour or colours required and measure the control strip. pressSIGN shows how to adjust the ink keys on all four, five or six colours.



consistently accurate colour

ISO 12647-2, ISO 12647-3

ISO 12647-4,

ISO 12647-6, GRACoL, SWOP
or any user defined standard

4 versions of pressSIGN

choose the version of pressSIGN to suit your needs
(see the compatibility chart on the right)

pressSIGN standard shows the operator how to adjust the density settings to hit the Lab targets and how to adjust the plate curve.

pressSIGN-Pro shows the user how to adjust individual ink keys across the press sheet using a variety of different scanning spectrophotometers. Full trend analysis from gathered data enables comparison of presses, operators make-ready times and much more. Multiple presses can feed one pressSIGN database.

pressSIGN-Trends works in conjunction with pressSIGN-Pro for the production manager who needs to view and analyse the pressSIGN database and watch the input from different presses in real time. It is a **free** option with every pressSIGN-Pro installation and is the administrative hub. Jobs can be created and allocated to the press or operator, analysed and viewed while on press. Plate curves can be created and adjusted from pressSIGN-Trends and pressSIGN reports can be uploaded to the web.

pressSIGN-PrintBuyer is designed for print buyers who need to measure the press sheet and set the press standard, based on a previous job, an ICC profile or an ISO or Fogra standard.

POVARESKIM

PROFISSIONAIS EM SISTEMAS GRÁFICOS

R. Carlos Petit, 221
04110-000 - São Paulo - SP
Telefax: (11) 5571.2683
email: vendas@povareskim.com.br
www.povareskim.com.br

System requirements :

Mac:
mac OS 10.3.9 or later
512MB RAM
2 USB ports (for Eye One & label printer)
colour monitor: 1280 x 1024

PC:
windows 2000, XP, Vista
512MB RAM
2 USB ports (for Eye One & label printer)
colour monitor: 1280 x 1024

functions	Standard	Pro	Trends	Print-Buyer
standards				
• ISO 12647-2, ISO 12647-3 ISO 12647-4, ISO 12647-6	√	√	√	√
• GRACoL G7	√	√	√	√
• import ICC profile / previous measurement user defined	√	√	√	√
diagnostics				
• density adjustments	√	√	√	
• plate curve adjustments	√	√	√	
input data				
• via X-Rite eye-one	√	√		√
• CGATS data via Intellitrac S, Komori PDCS, Heidelberg image control & others		√		
• X-Rite EasyTrax S, TechkonSpec- trojet, Techkon Spectrodrive		√		
measurement functions				
• density	√	√		√
• dot area	√	√		√
• CIEL*a*b*/deltaE	√	√		√
import/export				
• standards/measurements/dry back data/ICC profiles/colour bar	√	√	√	√
reports				
• label	√	√	√	√
• pdf measurement report without curve info				√
• pdf measurement report with curve info	√	√	√	
• pdf production report		√	√	
auto input				
• scans for CGATS data to auto input into pressSIGN		√		
views				
• summary view without density adjustment information				√
• summary view with density adjustment information	√	√	√	
• full sheet view		√	√	
• score trends view		√	√	
• value trends view		√	√	
production / make ready mode		√		
spot colour				
• PANTONE® licence	√	√	√	√
upload reports				
• online or by email	√	√	√	√